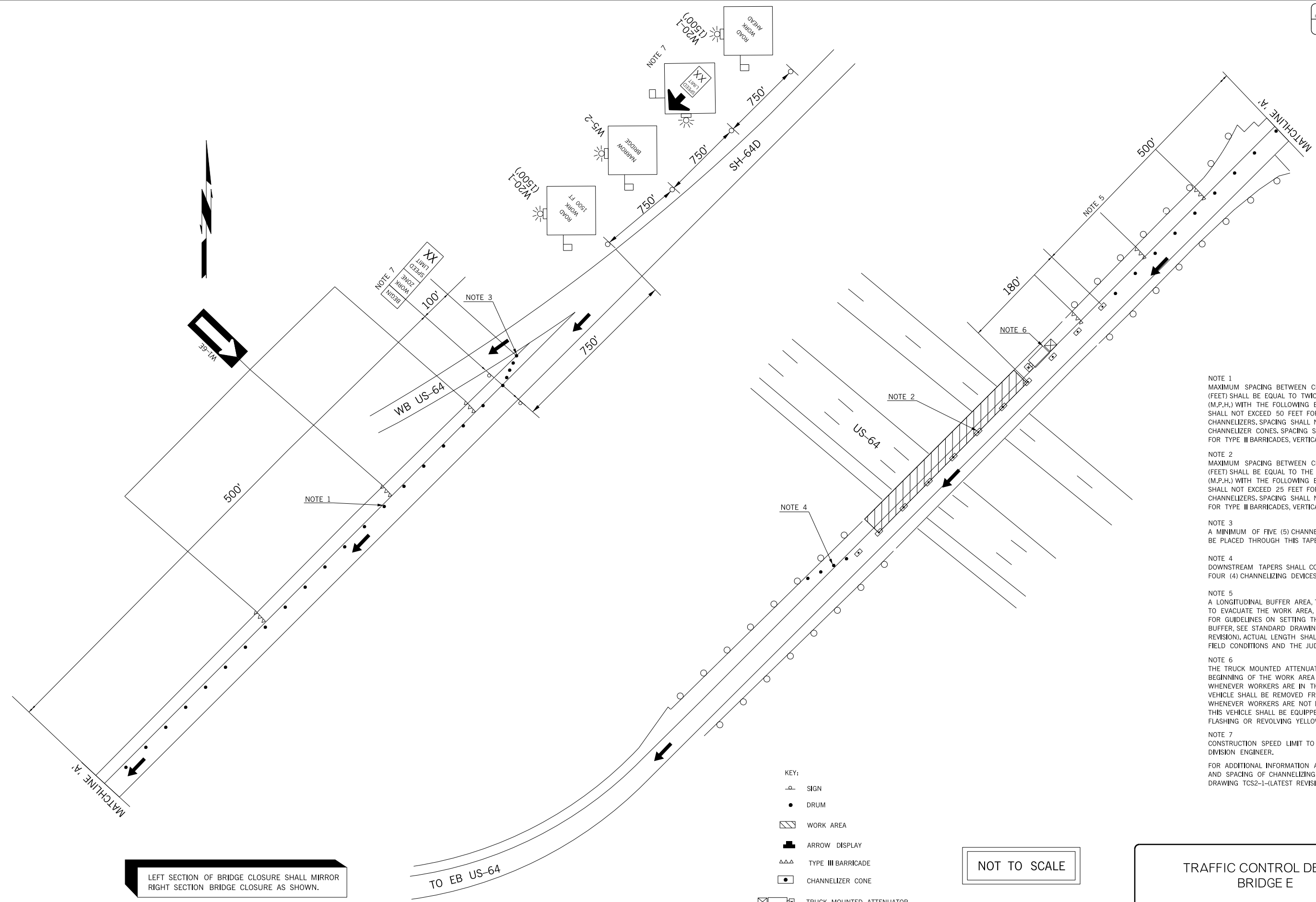


REVISIONS		
REV. NO.	DESCRIPTION	DATE



LEFT SECTION OF BRIDGE CLOSURE SHALL MIRROR RIGHT SECTION BRIDGE CLOSURE AS SHOWN.

- KEY:
- SIGN
 - DRUM
 - WORK AREA
 - ARROW DISPLAY
 - TYPE III BARRICADE
 - CHANNELIZER CONE
 - TRUCK MOUNTED ATTENUATOR

NOT TO SCALE

- NOTE 1
MAXIMUM SPACING BETWEEN CHANNELIZING DEVICES (FEET) SHALL BE EQUAL TO TWICE THE POSTED SPEED LIMIT (M.P.H.) WITH THE FOLLOWING EXCEPTIONS. SPACING SHALL NOT EXCEED 50 FEET FOR CONES OR TUBE CHANNELIZERS. SPACING SHALL NOT EXCEED 75 FEET FOR CHANNELIZER CONES. SPACING SHALL NOT EXCEED 100 FEET FOR TYPE II BARRICADES, VERTICAL PANELS OR DRUMS.
- NOTE 2
MAXIMUM SPACING BETWEEN CHANNELIZING DEVICES (FEET) SHALL BE EQUAL TO THE POSTED SPEED LIMIT (M.P.H.) WITH THE FOLLOWING EXCEPTIONS. SPACING SHALL NOT EXCEED 25 FEET FOR CONES OR TUBE CHANNELIZERS. SPACING SHALL NOT EXCEED 50 FEET FOR TYPE II BARRICADES, VERTICAL PANELS OR DRUMS.
- NOTE 3
A MINIMUM OF FIVE (5) CHANNELIZING DEVICES SHALL BE PLACED THROUGH THIS TAPER.
- NOTE 4
DOWNSTREAM TAPERS SHALL CONTAIN A MINIMUM OF FOUR (4) CHANNELIZING DEVICES.
- NOTE 5
A LONGITUDINAL BUFFER AREA, TO ALLOW WORKERS TIME TO EVACUATE THE WORK AREA, SHOULD BE PROVIDED. FOR GUIDELINES ON SETTING THE LENGTH OF THIS BUFFER, SEE STANDARD DRAWING TCS2-1-(LATEST REVISION). ACTUAL LENGTH SHALL BE DETERMINED BY FIELD CONDITIONS AND THE JUDGEMENT OF THE ENGINEER.
- NOTE 6
THE TRUCK MOUNTED ATTENUATOR SHOWN AT THE BEGINNING OF THE WORK AREA SHALL BE IN PLACE WHENEVER WORKERS ARE IN THE WORK AREA. THIS VEHICLE SHALL BE REMOVED FROM THE ROADWAY WHENEVER WORKERS ARE NOT IN THE WORK AREA. THIS VEHICLE SHALL BE EQUIPPED WITH AN ACTUATED FLASHING OR REVOLVING YELLOW LIGHT.
- NOTE 7
CONSTRUCTION SPEED LIMIT TO BE DETERMINED BY THE DIVISION ENGINEER.
- FOR ADDITIONAL INFORMATION ABOUT TAPER LENGTHS AND SPACING OF CHANNELIZING DEVICES, SEE STANDARD DRAWING TCS2-1-(LATEST REVISION).

TRAFFIC CONTROL DETAIL BRIDGE E			Drawn	SC	7/16
			Design	SC	7/16
STATE OF OKLAHOMA			Checked	JLS	7/16
			TRAFFIC ENGINEERING JAMI SHORT		
DEPARTMENT OF TRANSPORTATION		DIVISION 1	JOB/PIECE NO. 31694(04)	SHEET NO. T006	